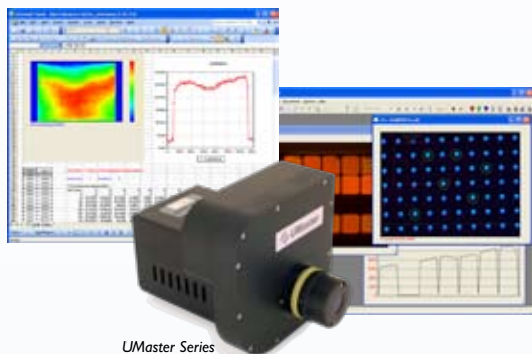
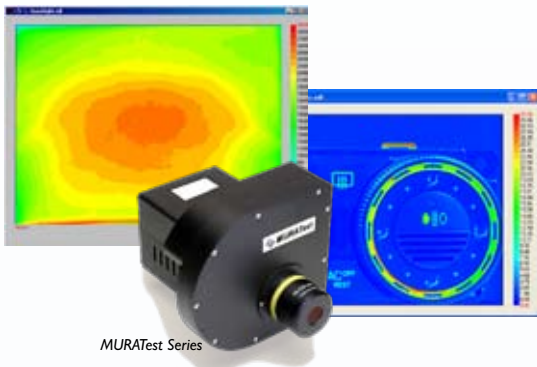
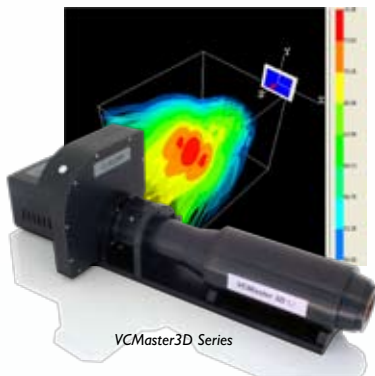
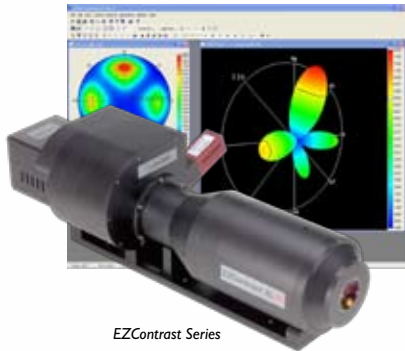
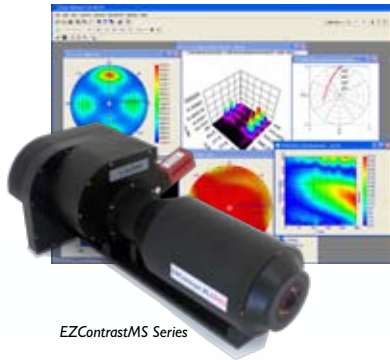


TOP CLASS SYSTEMS FOR LIGHT ANALYSIS



ADVANCED LIGHT ANALYSIS by ELDIM



ELDIM was established in 1991 as a spin-off from LETI (the electronic laboratory of the French Atomic Energy Commission) in order to commercialize key developments in display technology.

ELDIM products are the reference for faster and easier testing solutions, based on high performances CCD cameras, proprietary optics and advanced user-friendly software.

ELDIM can meet your R&D and Quality Control needs, providing solutions in :

- **Viewing Angle and BRDF** evaluation of flat panel display, 3D displays, LCD TV, OLED, PDA, films, polarizers,... with VMaster3D, EZContrastXLMS, EZContrast XL88, EZContrast L80, EZLite, EZLiteMicro.

- **Uniformity and Mura** inspection of whole panel area, cockpit, dashboard, monocular ... with UMaster & MURATest

- **Quantitative Imaging** for scientific applications with iSENSE & LABCam

- **Response time and Pattern generation** for displays characterization. Grey to grey level response time turn key solution with OPTIScope-SA, FPDlite and FPDdrive.

ELDIM develops and manufactures cooled digital cameras, video photometers and colorimeters, and turn-key inspection systems.

Our customers include :

BOSCH, SIEMENS, NOKIA, SAMSUNG SDI, LG.PHILIPS LCD, MERCK, SHARP, TOSHIBA, NEC, 3M, BOE HYDIS, FUJITSU, FUJIFILM, HITACHI, IBM, MATSUSHITA, PHILIPS, SAMSUNG ELEC, SHARP, SONY, BARCO, AGFA, GRUNDIG, U.S. ARMY, JOHNSON CONTROL, CASIO, KONICA, EPSON, MITSUBUSHI, RAYTHEON, LG CHEM, AUO, HANNSTAR, PALM CORP., ROCKWELL, VALEO...



ELDIM

ELECTRONICS FOR DISPLAYS AND IMAGING DEVICES